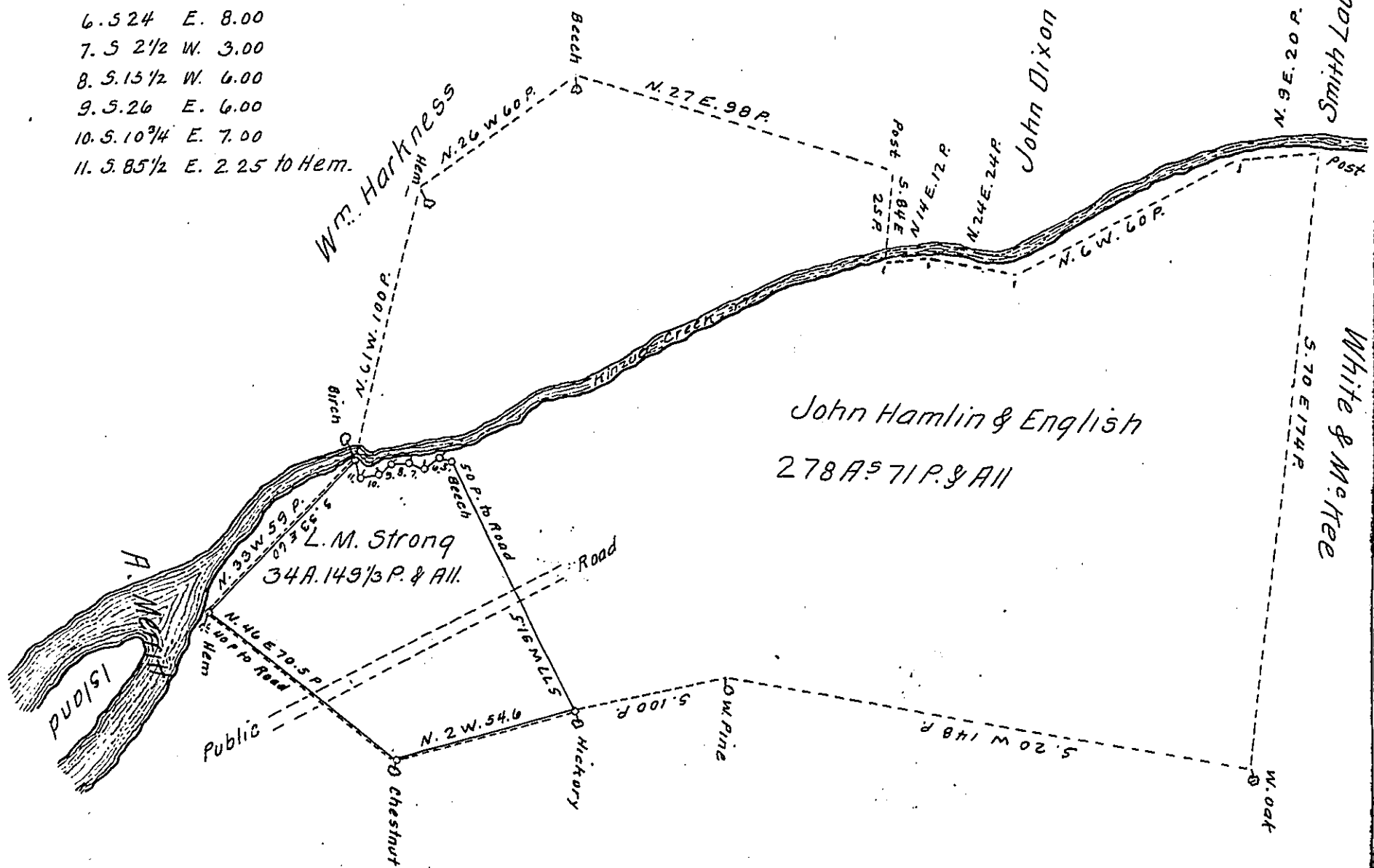


FORM No 1.

Courses & Distances up Creek

- 5. 50 1/2 E. 4.14 from beech
- 6. 524 E. 8.00
- 7. 5 2 1/2 W. 3.00
- 8. 5.15 1/2 W. 6.00
- 9. 5.26 E. 6.00
- 10. 5.10 3/4 E. 7.00
- 11. 5.85 1/2 E. 2.25 to Hem.



A draft of a tract of land situated in the township of Kinzua and county of Warren, containing 34 acres 149 1/3 perches and allowance of six per cent for roads etc. Surveyed for Lebbins M. Strong the 12<sup>th</sup> day of April A. D. 1881. It being a part of a larger tract of 278 acres 71 perches and allowance originally surveyed in pursuance of <sup>an actual settlement & improvement</sup> a warrant granted to John Hamlin & English dated the 4<sup>th</sup> day of October A. D. 1825. This survey made by Geo. B. Williams C. E. is hereby endorsed by me.

D. F. A. Wheelock C. S.

To Aaron K. Dunkel Secy of Int. Affs.  
Harrisburg Pa.

IN TESTIMONY that the above is a copy of the original remaining on file in the Department of Internal Affairs of Pennsylvania, made conformably to an Act of Assembly approved the 16th day of February, 1833, I have hereunto set my Hand and caused the Seal of said Department to be affixed at Harrisburg, this twenty sixth day of February 1907.

*Isaac D. Brown*  
Secretary of Internal Affairs.